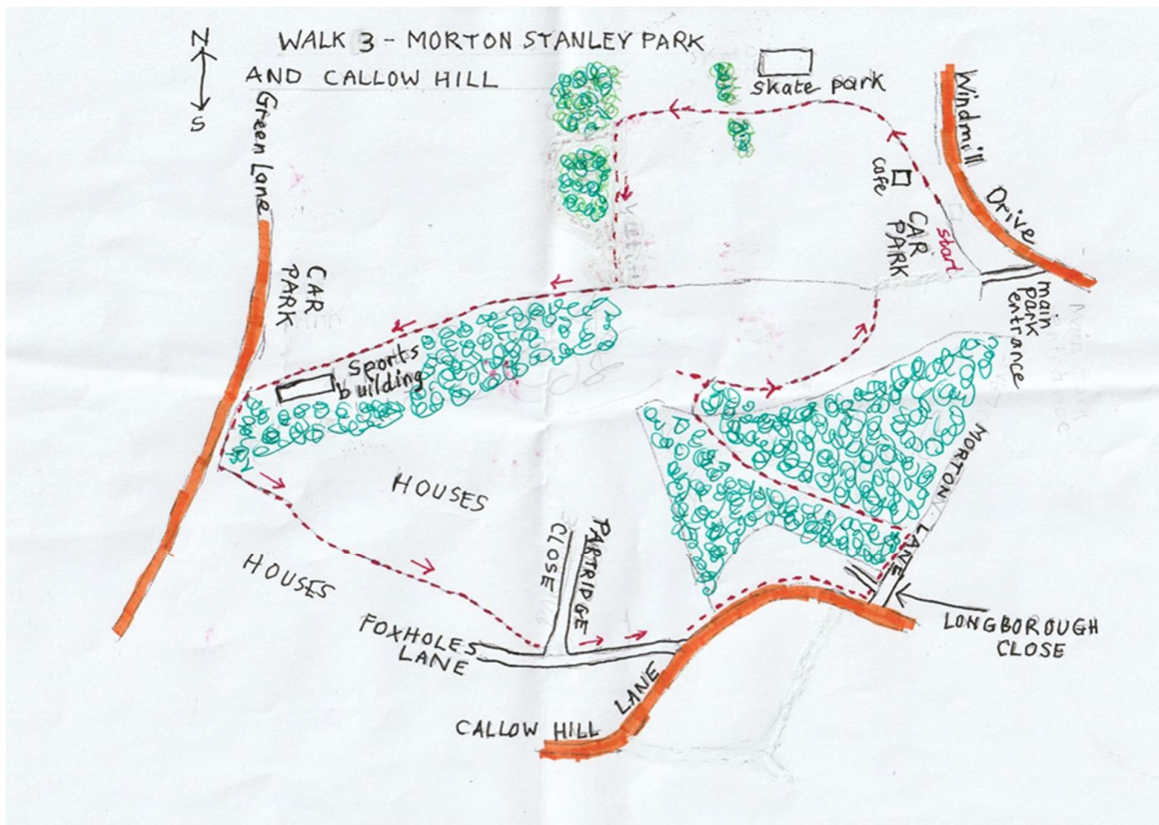


AWESOME AMBLERS WALK 3 – Morton Stanley Park & Callow Hill

Description:

Walk description: An interesting and scenic walk along park and woodland trails and by-roads. In the middle of the walk there is quite a long ascent which is steep in one short section. Then there is a descent through woodland. This is fairly easy although poles and correct walking shoes are recommended. Along the route you pass sculptures carved from trees showing the sort of wildlife to be found in the park. 2.5 miles.

(The short version is all on paved park paths, mostly level but with gentle inclines in places. 0.8 miles)



Walk details: From the car park walk along the paved path passing the café on your left until you reach a wooden carving of a fox. Ignore the path right here and follow the main path round towards the older children's skatepark.

Just past the skatepark is a gap in a low hedge. Through here on the right, you will see a carving of rabbits. Continue following the paved path round. The path curves round to the left until you see a carving of two birds of prey. Further along you will reach a sculpture of squirrels near a crossroads of paths.

Go straight ahead over the crossroads of paths and then at an information board right again along a paved path. Follow this path right down to the bottom end of the park where you will find a car park on the right and a low brick building with sports facilities on the left.

Just past this building turn left along a paved path which is running parallel with the road beyond the trees. Just before some steps leading to a footbridge over a stream turn left. Walk up steps and through some staggered railings into a cul-de-sac.

Walk uphill out of the cul-de-sac. Just past a long metal gate on the right walk-through staggered railings to pick up a stream on your right down below through the trees. Follow the path and you will emerge into a narrow strip of parkland with the stream down below on the right and houses on the left.

You will soon reach a T-junction of paths where you turn left passing a pond on the right. Follow the path, which becomes enclosed by hedges either side until you reach and cross Partridge Close.

Turn right to reach Foxholes Lane, then left up Foxholes Lane as far as the road, Callow Hill Lane.

Turn left along the pavement and follow it uphill as it diverts behind a hedge to remain parallel with the road. Continue following as it curves left and reaches Longborough Close. Cross Longborough and almost immediately find a way into the woods with a long metal gate and a small kissing gate.

Keep following the path downhill, ignoring a wider path off on the right and later a narrower path on the left. You will eventually descend into the park by an open grassy area. Maintaining direction cross the grassy area towards a path through a gap in the hedge.

You will reach the main paved path. Turn right and the end is in sight.